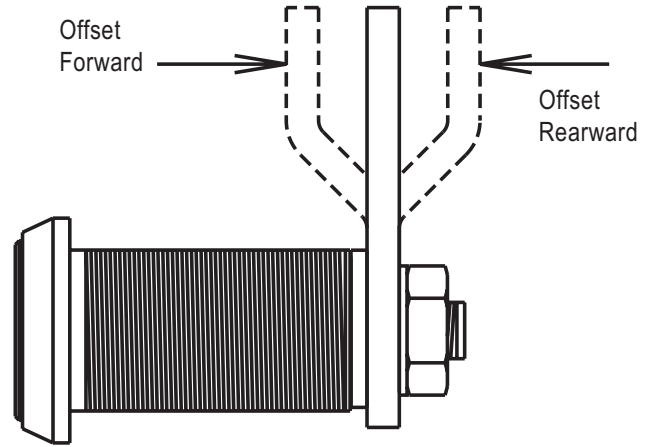
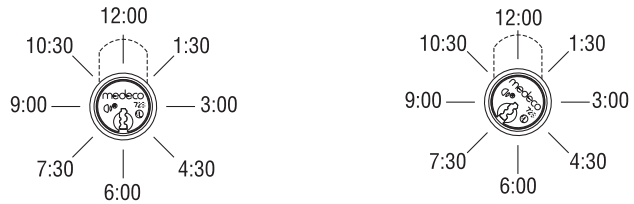


Technical Drawings

CAM SELECTION DETAIL - CAM TYPE SELECTOR



CAM SELECTION DETAIL - CAM TYPE SELECTOR

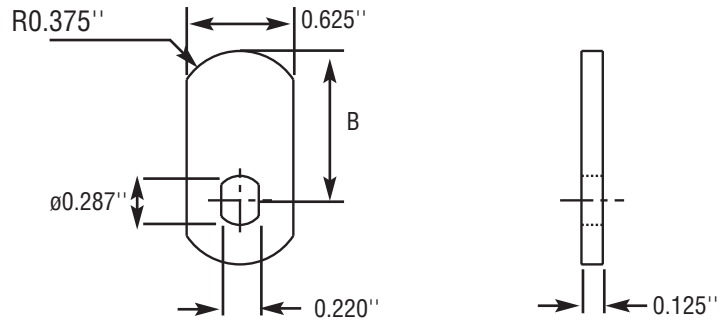


Mounting	Cam Mounting Position	Flat Cam	Offset Cam (Forward)	Offset Cam (Rearward)
Keyway at 6:00 in Locked Position	12:00	D	J	J
	1:30	C	S	P
	3:00	A	H	H
	4:30	C	P	S
	6:00	D	J	J
	7:30	C	S	P
	9:00	A	H	H
	10:30	C	P	S
Keyway at 7:30 in Locked Position	12:00	C	P	S
	1:30	D	J	J
	3:00	C	S	P
	4:30	A	H	H
	6:00	C	P	S
	7:30	D	J	J
	9:00	C	S	P
	10:30	A	H	H

Table Dimensions $\pm 1/32"$

Technical Drawings

CAM SELECTION DETAIL - A SERIES FLAT CAMS



Part #	Length (B)
CT-A00	5/8"
CT-A01	3/4"
CT-A02	7/8"
CT-A03	1"
CT-A04	1 1/8"
CT-A05	1 1/4"
CT-A06	1 3/8"
CT-A07	1 1/2"
CT-A08	1 5/8"
CT-A09	1 3/4"
CT-A11	2"
CT-A12	2 1/8"
CT-A13	2 1/4"
CT-A14	2 3/8"
CT-A15	2 1/2"
CT-A16	2 5/8"
CT-A19	3"

Table Dimensions ±1/32"

Technical Drawings

CAM SELECTION DETAIL - D SERIES FLAT CAMS

	Part #	Length (B)
	CT-D00	5/8"
	CT-D01	3/4"
	CT-D02	7/8"
	CT-D03	1"
	CT-D04	1 1/8"
	CT-D05	1 1/4"
	CT-D06	1 3/8"
	CT-D07	1 1/2"
	CT-D08	1 5/8"
	CT-D09	1 3/4"
	CT-D11	2"
	CT-D12	2 1/8"
	CT-D15	2 1/2"
	CT-D19	3"

CAM SELECTION DETAIL - C SERIES FLAT CAMS

	Part #	Length (B)
	CT-C00	5/8"
	CT-C01	3/4"
	CT-C02	7/8"
	CT-C03	1"
	CT-C04	1 1/8"
	CT-C05	1 1/4"
	CT-C08	1 5/8"
	CT-C09	1 3/4"
	CT-C11	2"
	CT-C12	2 1/8"

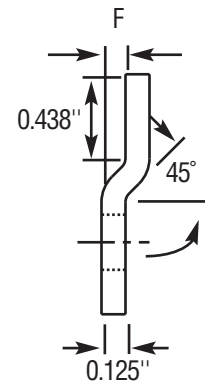
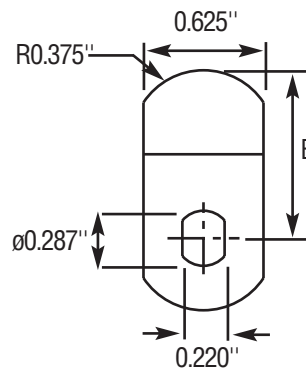
Table Dimensions $\pm 1/32''$

Technical Drawings

CAM SELECTION DETAIL - H SERIES 45° OFFSET CAM

B = Length

F = Offset



B	F	Part #
7/8"	5/32"	CT-H27
1"	1/8"	CT-H08
1 1/8"	1/8"	CT-H09
1 1/8"	5/32"	CT-H26
1 1/8"	7/32"	CT-H07
1 1/8"	5/16"	CT-H16
1 1/4"	1/8"	CT-H00
1 1/4"	5/32"	CT-H28
1 1/4"	7/32"	CT-H15
1 1/4"	5/16"	CT-H17
1 1/2"	1/8"	CT-H33
1 1/2"	7/32"	CT-H14
1 1/2"	5/16"	CT-H32
1 5/8"	1/8"	CT-H10
1 5/8"	5/32"	CT-H29
1 5/8"	7/32"	CT-H22
1 5/8"	5/16"	CT-H18
1 3/4"	1/8"	CT-H11
1 3/4"	5/32"	CT-H06
1 3/4"	7/32"	CT-H30
1 3/4"	5/16"	CT-H19
2"	1/8"	CT-H12
2"	5/32"	CT-H05
2"	7/32"	CT-H25
2"	5/16"	CT-H20
2 1/8"	1/8"	CT-H13
2 1/8"	5/32"	CT-H24
2 1/8"	5/16"	CT-H21
2 1/2"	1/8"	CT-H23

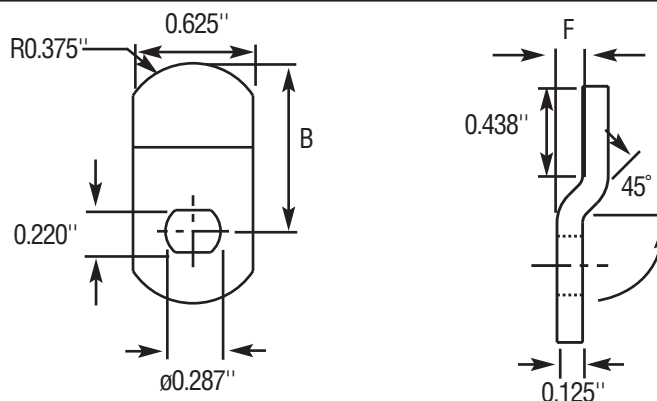
Table Dimensions ±1/32"

Technical Drawings

CAM SELECTION DETAIL - J SERIES 45° OFFSET CAM

B = Length

F = Offset



B	F	Part #
7/8"	5/32"	CT-J29
1"	1/8"	CT-J05
1 1/8"	1/8"	CT-J06
1 1/8"	5/32"	CT-J22
1 1/8"	7/32"	CT-J01
1 1/8"	5/16"	CT-J13
1 1/4"	1/8"	CT-J07
1 1/4"	5/32"	CT-J00
1 1/4"	7/32"	CT-J12
1 1/4"	5/16"	CT-J14
1 1/2"	1/8"	CT-J04
1 1/2"	5/16"	CT-J27
1 5/8"	1/8"	CT-J08
1 5/8"	5/32"	CT-J23
1 5/8"	7/32"	CT-J19
1 5/8"	5/16"	CT-J15
1 3/4"	1/8"	CT-J09
1 3/4"	5/32"	CT-J24
1 3/4"	7/32"	CT-J20
1 3/4"	5/16"	CT-J16
2"	1/8"	CT-J10
2"	5/32"	CT-J25
2"	7/32"	CT-J26
2"	5/16"	CT-J17
2 1/8"	1/8"	CT-J11
2 1/8"	5/16"	CT-J18
2 5/8"	7/32"	CT-J28

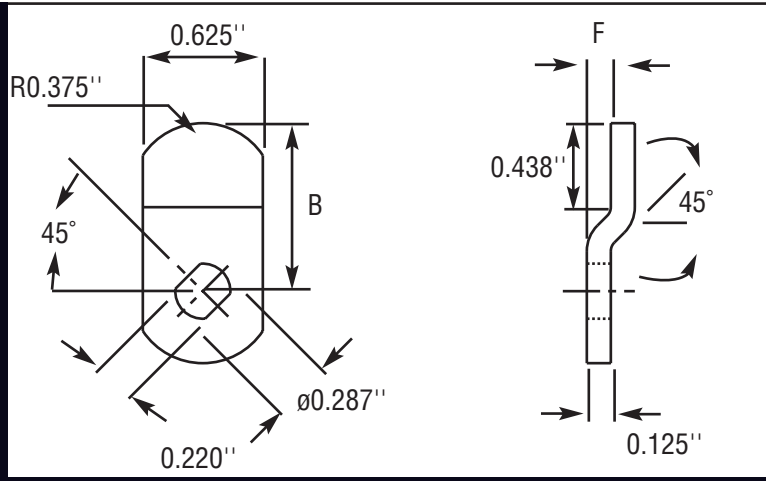
Table Dimensions ±1/32"

Technical Drawings

CAM SELECTION DETAIL - P SERIES 45° OFFSET CAM

B = Length

F = Offset



B	F	Part #
7/8"	5/32"	CT-P18
1"	1/8"	CT-P09
1 1/8"	1/8"	CT-P10
1 1/8"	5/32"	CT-P02
1 1/8"	7/32"	CT-P08
1 1/8"	5/16"	CT-P17
1 1/4"	1/8"	CT-P03
1 1/4"	5/32"	CT-P27
1 1/4"	7/32"	CT-P16
1 1/4"	5/16"	CT-P00
1 1/2"	1/8"	CT-P31
1 1/2"	7/32"	CT-P15
1 1/2"	5/16"	CT-P30
1 5/8"	1/8"	CT-P11
1 5/8"	5/32"	CT-P28
1 5/8"	7/32"	CT-P23
1 5/8"	5/16"	CT-P19
1 3/4"	1/8"	CT-P12
1 3/4"	5/32"	CT-P07
1 3/4"	7/32"	CT-P29
1 3/4"	5/16"	CT-P20
2"	1/8"	CT-P13
2"	5/32"	CT-P06
2"	7/32"	CT-P26
2"	5/16"	CT-P21
2 1/8"	1/8"	CT-P14
2 1/8"	5/32"	CT-P25
2 1/8"	5/16"	CT-P22
2 1/2"	1/8"	CT-P24
2 5/8"	7/32"	CT-P33

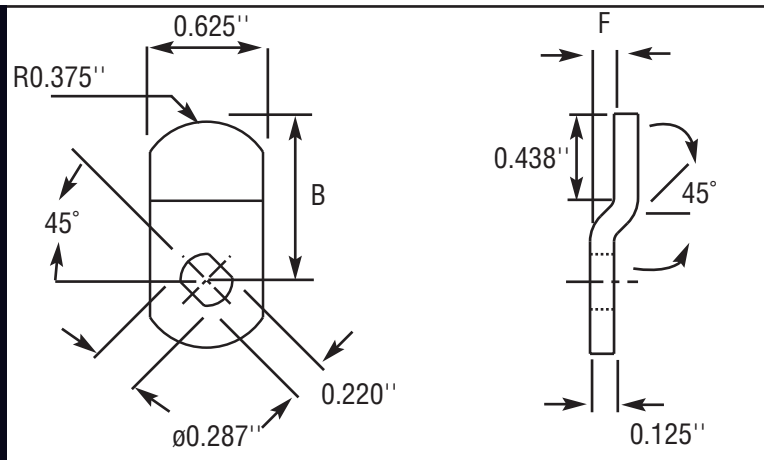
Table Dimensions $\pm 1/32$ "

Technical Drawings

CAM SELECTION DETAIL - S SERIES 45° OFFSET CAM

B = Length

F = Offset



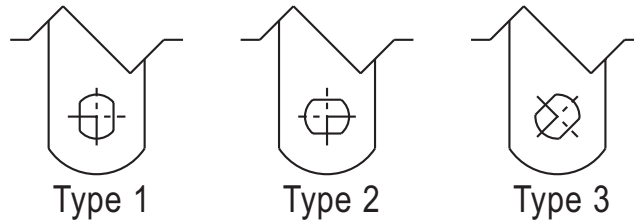
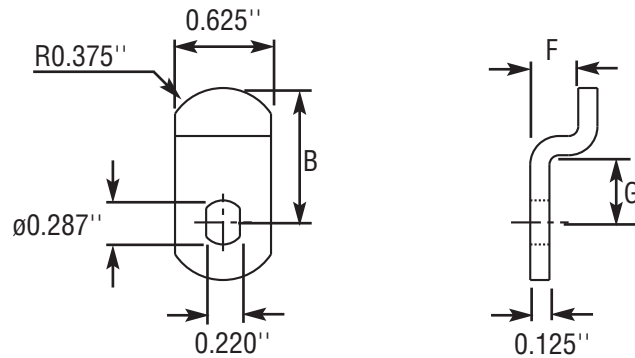
B	F	Part #
7/8"	5/32"	CT-S18
1"	1/8"	CT-S09
1 1/8"	1/8"	CT-S10
1 1/8"	5/32"	CT-S02
1 1/8"	7/32"	CT-S08
1 1/8"	5/16"	CT-S17
1 1/4"	1/8"	CT-S03
1 1/4"	5/32"	CT-S27
1 1/4"	7/32"	CT-S16
1 1/4"	5/16"	CT-S00
1 1/2"	1/8"	CT-S31
1 1/2"	7/32"	CT-S15
1 1/2"	5/16"	CT-S30
1 5/8"	1/8"	CT-S11
1 5/8"	5/32"	CT-S28
1 5/8"	7/32"	CT-S23
1 5/8"	5/16"	CT-S19
1 3/4"	1/8"	CT-S12
1 3/4"	5/32"	CT-S07
1 3/4"	7/32"	CT-S29
1 3/4"	5/16"	CT-S20
2"	1/8"	CT-S13
2"	5/32"	CT-S06
2"	7/32"	CT-S26
2"	5/16"	CT-S21
2 1/8"	1/8"	CT-S14
2 1/8"	5/32"	CT-S25
2 1/8"	5/16"	CT-S22
2 1/2"	1/8"	CT-S24
2 5/8"	7/32"	CT-S33

Table Dimensions ±1/32"

Technical Drawings

CAM SELECTION DETAIL - G SERIES 90° OFFSET CAM

B = Length
F = Offset
G = Length to Offset



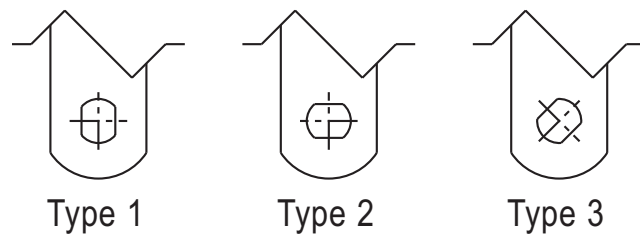
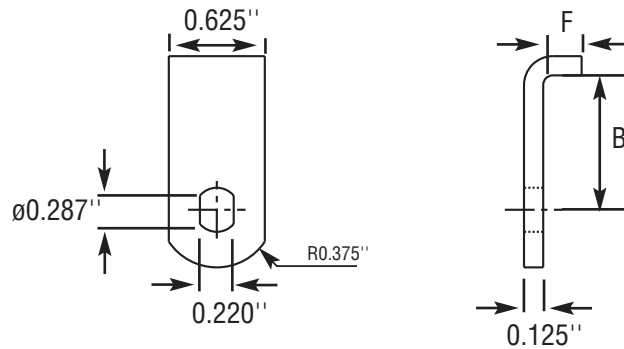
B	F	G	Type	Part #
3/4"	1"	1/4"	1	CT-G02
7/8"	11/16"	3/8"	1	CT-G05
7/8"	5/16"	7/16"	1	CT-G09
7/8"	1/2"	3/8"	1	CT-G07
1 1/4"	9/16"	1/2"	1	CT-G03
1 3/8"	9/16"	3/4"	1	CT-G04
1 1/2"	1/2"	9/16"	1	CT-G06
1 1/2"	9/16"	3/4"	1	CT-G01
1 1/2"	9/16"	9/16"	1	CT-G08
7/8"	5/16"	7/16"	2	CT-G51
1 1/8"	7/16"	7/16"	2	CT-G55
1 1/2"	1/2"	9/16"	2	CT-G56
1 1/2"	35/64"	3/4"	2	CT-G53
1 5/8"	7/16"	7/16"	2	CT-G57
1 1/4"	9/16"	3/8"	3	CT-G98
1 1/4"	9/16"	1/2"	3	CT-G99

Table Dimensions ±1/32"

Technical Drawings

CAM SELECTION DETAIL - K SERIES 90° BENT CAM

B = Length
F = Offset
G = Length to Offset

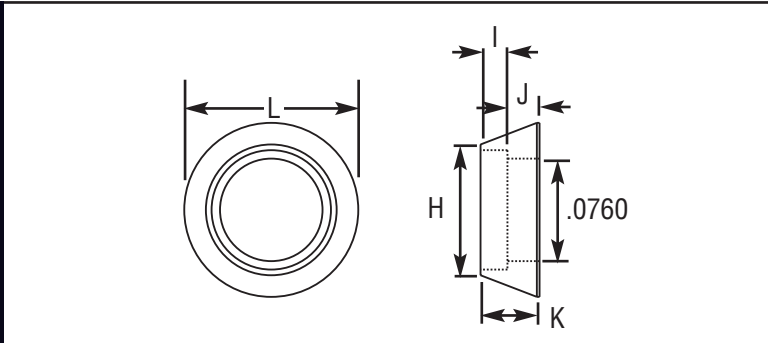


B	F	Type	Part #
7/16"	9/16"	1	CT-K13
1/2"	1/4"	1	CT-K12
11/16"	7/16"	1	CT-K02
3/4"	5/8"	1	CT-K05
7/8"	1/4"	1	CT-K10
15/16"	3/8"	1	CT-K01
1 1/4"	1/4"	1	CT-K07
1 5/16"	9/16"	1	CT-K08
1 1/2"	9/16"	1	CT-K00
1 5/16"	9/16"	2	CT-K11
1 9/16"	1/4"	2	CT-K06
1 5/16"	9/16"	3	CT-K09

Table Dimensions $\pm 1/32$ "

Technical Drawings

SECURITY COLLARS



(H)	(I)	(J)	(K)	(L)	Part #
1.000"	.142"	.170"	.312"	1.290"	CP-070501
.885"	.142"	.170"	.312"	1.210"	CP-070131
.885"	.188"	.250"	.438"	1.356"	CP-070161
.885"	.200"	.238"	.438"	1.290"	CP-070171
.885"	.260"	.070"	.330"	1.210"	CP-070441
.885"	.262"	.050"	.312"	1.210"	CP-070201
.885"	.278"	.160"	.438"	1.290"	CP-070111
.885"	.325"	.050"	.375"	1.275"	CP-070141
1.000"	.450"	.050"	.500"	1.250"	CP-070181
1.000"	.638"	.050"	.688"	1.313"	CP-070481

SPACERS

(M)	(N)	Part #
.125"	.875"	CP-160051
.140"	.875"	CP-160101
.188"	.875"	CP-160071
.200"	.875"	CP-160111
.250"	.875"	CP-160081
.275"	.875"	CP-160091
.375"	.875"	CP-160301
.400"	.875"	CP-160121
.530"	.875"	CP-160061
.437"	.875"	CP-160271
.031"	.875"	CP-160541
.062"	.875"	CP-160551
.312"	.875"	CP-160571
.062"	.995"	CP-160591
.125"	.995"	CP-160601
.250"	.995"	CP-160611

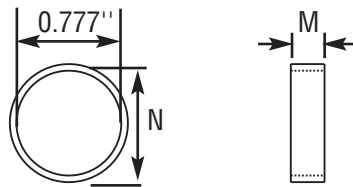
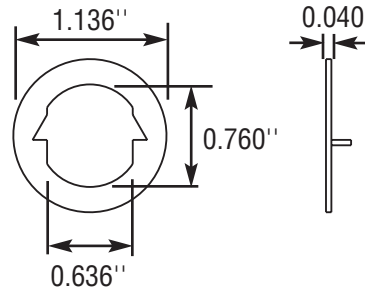


Table Dimensions $\pm 1/32"$

Technical Drawings

DOUBLE D SPUR WASHER



Used to provide double “D” mounting for cam lock applications on wood surfaces. Requires a 3/4" predrilled mounting hole.